



## Apelle bookcase

design Beatriz Sempere, 2013

Apelle bookcase with metal structure and wooden shelves. Optional: leather drawers.

The Apelle bookcase collection is composed by four models with different height, starting from one single drawer to four.

### Colors and Materials

#### Structure



White steel



Sand steel



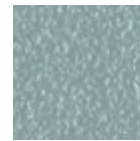
Pastel yellow steel



Grafite steel



Black steel



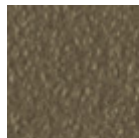
Light blue steel



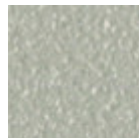
Ocean blue steel



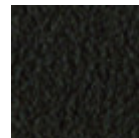
Bronze Steel



Fango steel



Light grey steel



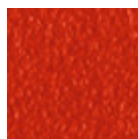
Brown steel



Ocher steel



Facepowder pink steel



Red steel

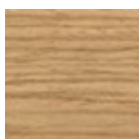


Sage green steel

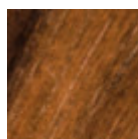


Black Nickel

#### Coating



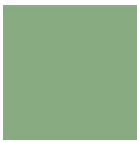
Lacquered veneered wood



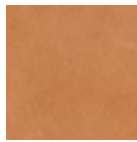
Veneered flamed walnut

9 Colors

#### Extensions

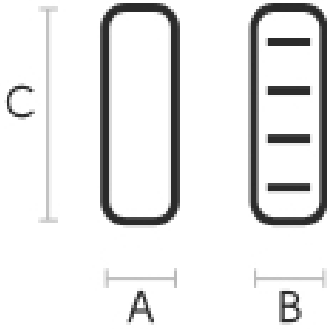


**Hide**  
20 Colors



**Tuscan hide**  
3 Colors

## Dimensions



|                            | A (cm)<br>(inch) | B (cm)<br>(inch) | C (cm)<br>(inch) |
|----------------------------|------------------|------------------|------------------|
| <b>Apelle 1</b>            | 43.8             | 135              | 40.5             |
| <b>P.40 (cm)</b><br>(inch) | 17.2             | 53.1             | 15.9             |
| <b>Apelle 2</b>            | 43.8             | 135              | 82.5             |
| <b>P.40 (cm)</b><br>(inch) | 17.2             | 53.1             | 32.5             |
| <b>Apelle 3</b>            | 43.8             | 135              | 131              |
| <b>P.40 (cm)</b><br>(inch) | 17.2             | 53.1             | 51.6             |
| <b>Apelle 4</b>            | 43.8             | 135              | 173              |
| <b>P.40 (cm)</b><br>(inch) | 17.2             | 53.1             | 68.1             |

## Volumetric Details

**Weight** 15 Kg  
**Volume** 0.95 mc  
**Package** 5

## Downloads

- [.3ds Apelle bookcase one drawer d.60 \(zip\)](https://www.midj.com/images/uploads/resources/3ds-apelle-bookcase60-1d.zip) - <https://www.midj.com/images/uploads/resources/3ds-apelle-bookcase60-1d.zip>
- [.dxf Apelle bookcase one drawer d.60 \(zip\)](https://www.midj.com/images/uploads/resources/3d-apelle-bookcase60-1d-cad.zip) - <https://www.midj.com/images/uploads/resources/3d-apelle-bookcase60-1d-cad.zip>
- [.dae Apelle bookcase one drawer d.60 \(zip\)](https://www.midj.com/images/uploads/resources/3d-apelle-bookcase60-1d-sketchup.zip) - <https://www.midj.com/images/uploads/resources/3d-apelle-bookcase60-1d-sketchup.zip>
- [.obj Apelle bookcase one drawer d.60 \(zip\)](https://www.midj.com/images/uploads/resources/3d-apelle-bookcase60-1d-obj.zip) - <https://www.midj.com/images/uploads/resources/3d-apelle-bookcase60-1d-obj.zip>
- [.3ds Apelle bookcase one drawer d.40 \(zip\)](https://www.midj.com/images/uploads/resources/3ds-apelle-bookcase40-1d.zip) - <https://www.midj.com/images/uploads/resources/3ds-apelle-bookcase40-1d.zip>
- [.dxf Apelle bookcase one drawer d.40 \(zip\)](https://www.midj.com/images/uploads/resources/3d-apelle-bookcase40-1d-cad.zip) - <https://www.midj.com/images/uploads/resources/3d-apelle-bookcase40-1d-cad.zip>
- [.dae Apelle bookcase one drawer d.40 \(zip\)](https://www.midj.com/images/uploads/resources/3d-apelle-bookcase40-1d-sketchup.zip) - <https://www.midj.com/images/uploads/resources/3d-apelle-bookcase40-1d-sketchup.zip>
- [.obj Apelle bookcase one drawer d.40 \(zip\)](https://www.midj.com/images/uploads/resources/3d-apelle-bookcase40-1d-obj.zip) - <https://www.midj.com/images/uploads/resources/3d-apelle-bookcase40-1d-obj.zip>
- [.3ds Apelle bookcase two drawers d.40 \(zip\)](https://www.midj.com/images/uploads/resources/3ds-apelle-bookcase40-2d.zip) - <https://www.midj.com/images/uploads/resources/3ds-apelle-bookcase40-2d.zip>
- [.dxf Apelle bookcase two drawers d.40 \(zip\)](https://www.midj.com/images/uploads/resources/3d-apelle-bookcase40-2d-cad.zip) - <https://www.midj.com/images/uploads/resources/3d-apelle-bookcase40-2d-cad.zip>
- [.dae Apelle bookcase two drawers d.40 \(zip\)](https://www.midj.com/images/uploads/resources/3d-apelle-bookcase40-2d-sketchup.zip) - <https://www.midj.com/images/uploads/resources/3d-apelle-bookcase40-2d-sketchup.zip>
- [.obj Apelle bookcase two drawers d.40 \(zip\)](https://www.midj.com/images/uploads/resources/3d-apelle-bookcase40-2d-obj.zip) - <https://www.midj.com/images/uploads/resources/3d-apelle-bookcase40-2d-obj.zip>
- [.3ds Apelle bookcase three drawers d.40 \(zip\)](https://www.midj.com/images/uploads/resources/3ds-apelle-bookcase40-3d.zip) - <https://www.midj.com/images/uploads/resources/3ds-apelle-bookcase40-3d.zip>
- [.dxf Apelle bookcase three drawers d.40 \(zip\)](https://www.midj.com/images/uploads/resources/3d-apelle-bookcase40-3d-cad.zip) - <https://www.midj.com/images/uploads/resources/3d-apelle-bookcase40-3d-cad.zip>
- [.dae Apelle bookcase three drawers d.40 \(zip\)](https://www.midj.com/images/uploads/resources/3d-apelle-bookcase40-3d-sketchup.zip) - <https://www.midj.com/images/uploads/resources/3d-apelle-bookcase40-3d-sketchup.zip>
- [.obj Apelle bookcase three drawers d.40 \(zip\)](https://www.midj.com/images/uploads/resources/3d-apelle-bookcase40-3d-obj.zip) - <https://www.midj.com/images/uploads/resources/3d-apelle-bookcase40-3d-obj.zip>
- [.3ds Apelle bookcase four drawers d.40 \(zip\)](https://www.midj.com/images/uploads/resources/3ds-apelle-bookcase40-4d.zip) - <https://www.midj.com/images/uploads/resources/3ds-apelle-bookcase40-4d.zip>
- [.dxf Apelle bookcase four drawers d.40 \(zip\)](https://www.midj.com/images/uploads/resources/3d-apelle-bookcase40-4d-cad.zip) - <https://www.midj.com/images/uploads/resources/3d-apelle-bookcase40-4d-cad.zip>
- [.dae Apelle bookcase four drawers d.40 \(zip\)](https://www.midj.com/images/uploads/resources/3d-apelle-bookcase40-4d-sketchup.zip) - <https://www.midj.com/images/uploads/resources/3d-apelle-bookcase40-4d-sketchup.zip>
- [.obj Apelle bookcase four drawers d.40 \(zip\)](https://www.midj.com/images/uploads/resources/3d-apelle-bookcase40-4d-obj.zip) - <https://www.midj.com/images/uploads/resources/3d-apelle-bookcase40-4d-obj.zip>

## Materials Certifications

Lacquered veneered wood

FEATURES AND PLUS

The veneered tops are the result of a process of bonding of thin wooden sheets, obtained by the horizontal rotary cut of the trunks applied to various types of supports to produce furniture elements, which look similar to solid wood but with better performance in terms of resistance to woodworms, lightness and more stability over time.

#### MAINTENANCE

For the regular cleaning schedule of stained veneered tops, use a damp cloth with mild soap diluted in water or specific products. Dry with a cloth or absorbent paper. Do not use abrasive products. . In case of accidental release of liquid substances, dab immediately the surface with absorbent paper or a dry, clean cloth. Avoid proximity to heat sources. Expose the veneered wood surfaces to light, for example by opening periodically the extensions of the tables that are placed inside the structures, or by moving any objects such as vases and accessories generally resting on the top.